



# Ascent™ Max

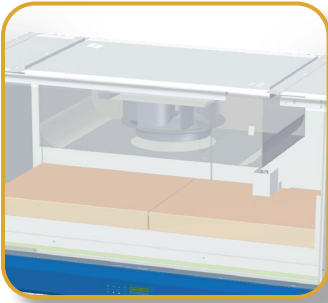
## Containment Ventilated Enclosure

- The Safe, Energy-Efficient, and Easy to Clean PEC
- For USP 800 Hazardous Non-Sterile Compounding



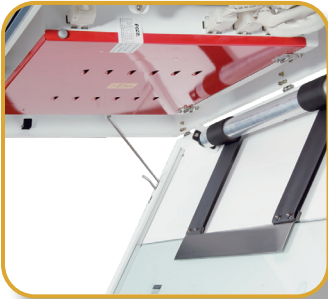
# Esco Ascent™ Max Containment Ventilated Enclosure

*Provides Operator and Environment Protection*



## Centrifugal Fan

- Permanently lubricated fans are energy efficient with external rotor motor design that reduces operating costs
- Extremely low noise and low vibration level



## Robust Hood Construction

- Key components including LED lamps, motor capacitor, electrical harness, electronic ballast, and switch control are mounted outside the airstream and away from contaminated areas to permit easy service



## HEPA Filter

- Diffusion technology to ensure even filter loading
- Efficient perimeter clamping ensures no leakage as well as allows easy filter change procedure



## Rear Walls

- Electro galvanized steel wall for superior durability



## Work Top

- Phenolic resin worktop
- Easy to clean, corrosion and chemical resistant makes it an ideal worktop for experiments



*Ascent™ Max Containment Ventilated Enclosure, Model ADC-4F1 (Shown with STA)*



### Sentinel™ Silver Microprocessor Control, Alarm System

- Advanced microprocessor control supervises operation of all hood functions. Temperature-compensated air velocity sensor monitors airflow. 24-hour clock and blower run hour meter are standard.

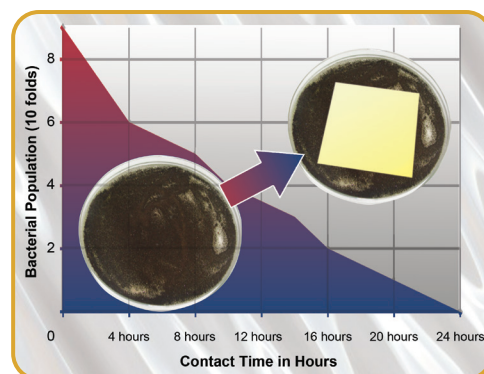
### Hinged Polycarbonate Sash

- Allows easy access and easy cleaning



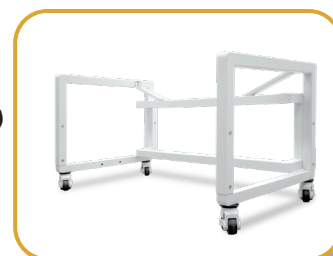
### ISOCIDE™ Powder Coat

- Silver-ion impregnated powder coat
- Inhibit microbial growth to improve safety



### Support Stand

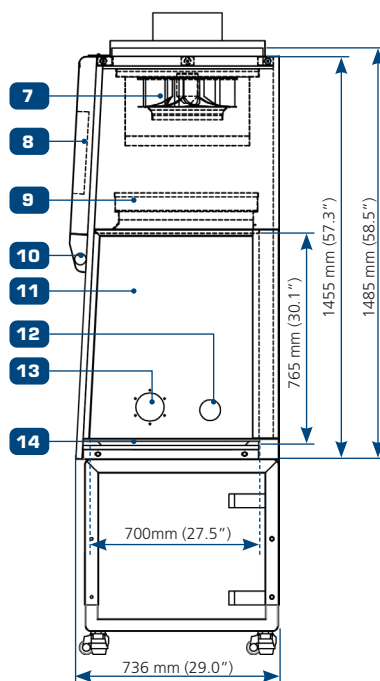
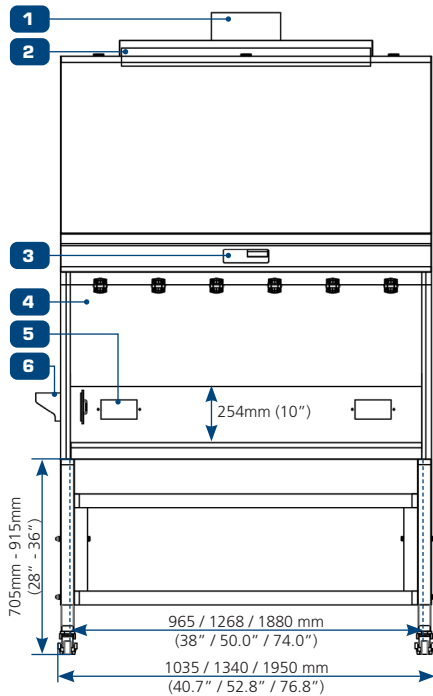
- Made from durable material to support a maximum weight of 500-600 Kg (1102 - 1322 lbs)



Standards Compliance	Filtration	Electrical Safety
	IEST-RP-CC001.3, USA IEST-RP-CC007, USA IEST-RP-CC034.1, USA	UL-61010-1, USA/Canada CAN/CSA-22.2, No.61010-1 EN-61010-1, Europe IEC61010-1, Worldwide

General Specifications, Ascent™ Max Containment Ventilated Enclosure				
Model		ADC-3F1	ADC-4F1	ADC-6F1
External Dimensions (W x D x H)		1035 x 736 x 1485 mm (40.7" x 29.0" x 58.5")	1340 x 736 x 1485 mm (52.8" x 29.0" x 58.5")	1950 x 736 x 1485 mm (76.8" x 29.0" x 58.5")
Internal Work Area (W x D x H)		965 x 596 x 765 mm (38.0" x 23.5" x 30.1")	1268 x 596 x 765 mm (50.0" x 23.5" x 30.1")	1880 x 596 x 765 mm (74.0" x 23.5" x 30.1")
Filtration System	Primary Filter	HEPA filter, typical efficiency of >99.99% at 0.3 microns, removes particulates and aerosols		
	Secondary Filter	HEPA filter, typical efficiency of >99.99% at 0.3 microns, removes particulates and aerosols		
Exhaust Ducting		Optional Exhaust Collar with 10" diameter. Not included as standard item		
Inflow Air Velocity		Initial Setpoint : 0.4 m/s or 80 fpm		
Air Volume		567 m³/h (334 cfm)		
Sound Emission		62 dBA		
LED Light Intensity at Zero Ambient		>800 Lux (>74 foot-candles)		
Hood Construction	Main Body	1.2 mm (0.05") 18 gauge electro-galvanized steel with white oven-baked epoxy-polyester Isocide™ antimicrobial powder coated finish		
	Side Walls	Polycarbonate		
	Work Top	Phenolic resin		

## Engineering Drawing



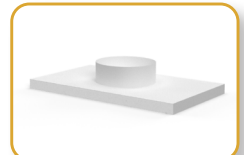
1. OPTIONAL exhaust collar with 10" diameter
2. Secondary HEPA filter
3. Esco Sentinel™ Silver Microprocessor
4. Hinged window
5. Electrical Outlet
6. Interchangeable stainless steel waste bag port
7. Blower

8. Electrical/ Electronics panel
9. Primary HEPA filter
10. LED lamp
11. Polycarbonate sides
12. Cable port
13. 4" Diameter waste chute
14. Phenolic resin worktop

## Common Accessories



Ergonomic Lab Chair



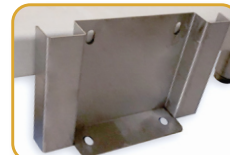
Exhaust Collar



IQ OQ



Foot Rest



Seismic Bracket



STA Support Stand